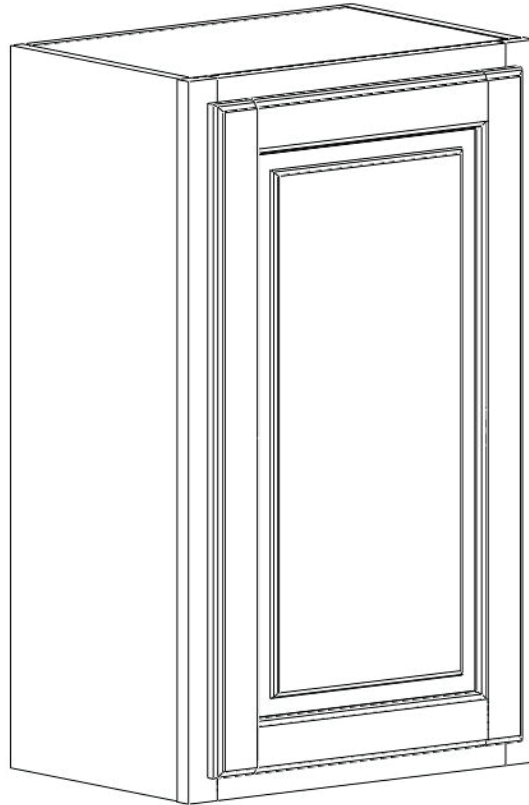


DIMENSION[®]
C A B I N E T S

Wall Cabinet



Assembly Guide

1

More assembly info available at:
www.dimensioncabinets.com/assembly
or drop us an email at:
info@dimensioncabinets.com



DIMENSION[®]
C A B I N E T S

Hey there!

Assembling our cabinets is really simple, but in case you're a little nervous, this guide should help. Simply follow these quick easy instructions and you'll be a cabinet assembly master in no time. It's painless, promise!

Unlike many other ready-to-assemble (RTA) cabinets on the market, ours require NO hot glue guns, NO staple guns, NO bar clamps, or anything more sophisticated than a Phillips screwdriver and rubber mallet. NO KIDDING!

To speed up the assembly process, it can help to use an electric screwdriver.

Dimension Cabinets use the most versatile (it's simple too) fastening system. We call them EZ-Squares. They're basically angle brackets that are simple to use and really forgiving when installing. We'll show you where to place them, you anchor 2-4 screws and before you know it, you'll have two surfaces squarely and securely fastened together. It's really that simple. Some companies use cam-locks, and those are fine. We found that after a lot of in-field testing, and analysis, we're confident EZ-Squares are faster, simpler, and easier in the long run.

All hardware, mounting brackets, shelves, drawer pulls and screws are provided. A few extra screws are usually included as well.

Note:

As with anything new you do, there's a learning curve. We recommend you start with an easy wall cabinet when getting the hang of things, and then tackle the bigger more intricate pieces from there.

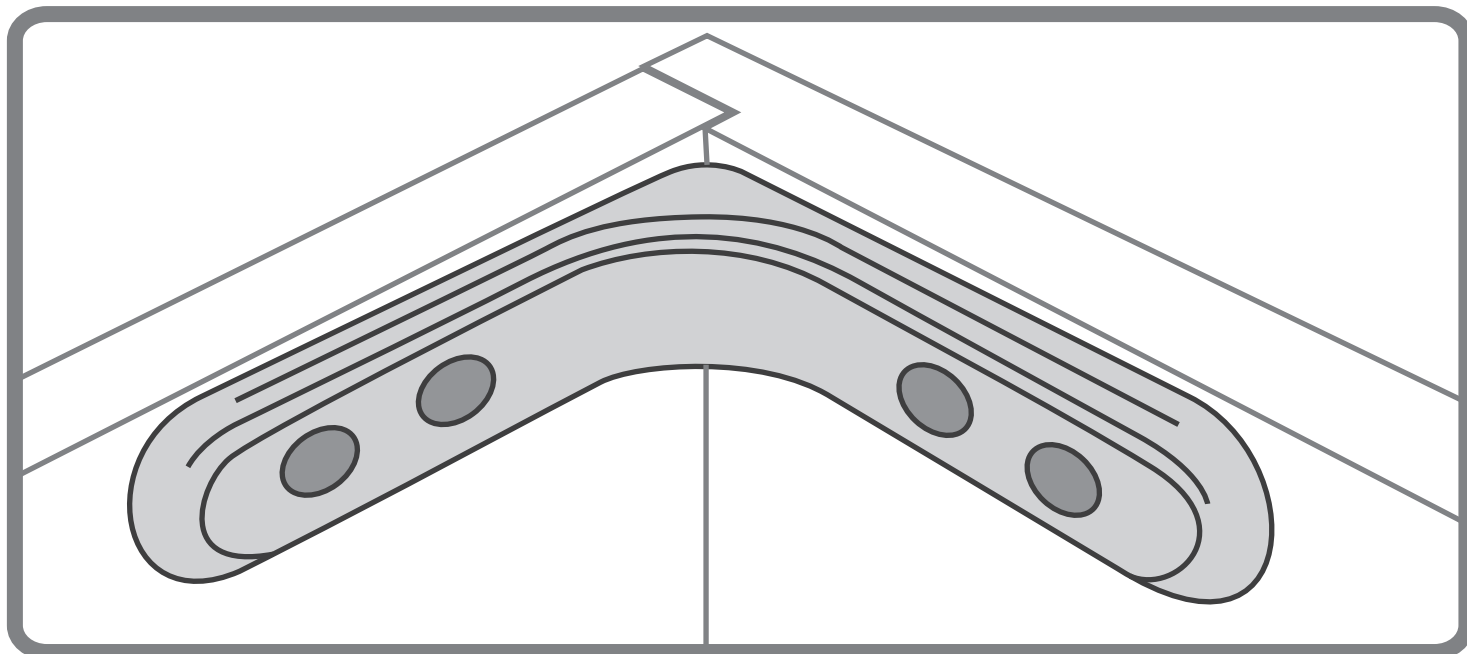
Let's get to it!

2

More assembly info available at:
www.dimensioncabinets.com/assembly
or drop us an email at:
info@dimensioncabinets.com



Meet EZ-Squares



Above you is the main fastening system for all Dimension Cabinetry. We call them EZ-Squares, because they are easy to use and will leave you with a strong and square cabinet in the end.

Using them is... easy! simply line one side up with the edge of one surface, fasten it with two screws on that side, line up the adjacent piece and fasten the other two screws. Presto! You have a strong reinforced connection that took very little time to accomplish. It really is that easy!

Now let's assemble a cabinet already!

Step 1 | Unpack & Organize

 1-2 mins

Place your RTA cabinet panels on a smooth, scratch resistant surface in a large, open area. Some people like to work on a carpeted area; others prefer to elevate the cabinet by placing it on a table top. If you are not using a carpeted area, use the foam sheets and box the cabinet came in to help protect the cabinet from being scratched during assembly.

3

More assembly info available at:
www.dimensioncabinets.com/assembly
or drop us an email at:
info@dimensioncabinets.com



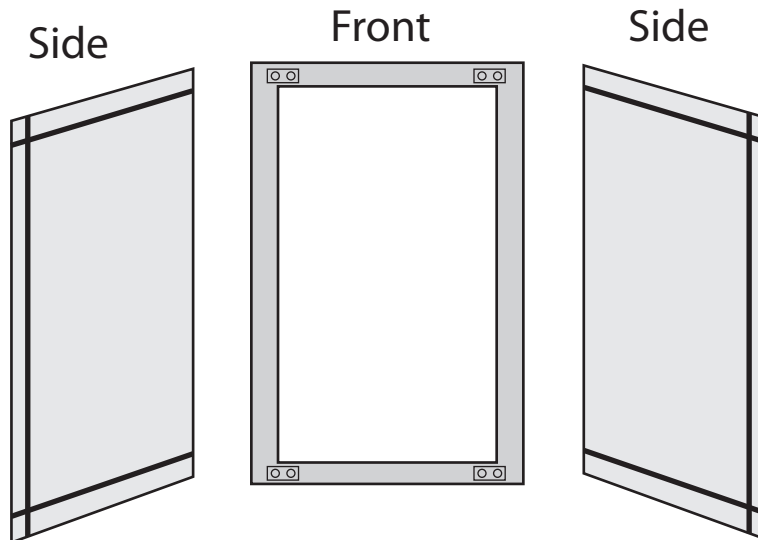
DIMENSION[®]
C A B I N E T S

Step 2 | Attach Sides To Front

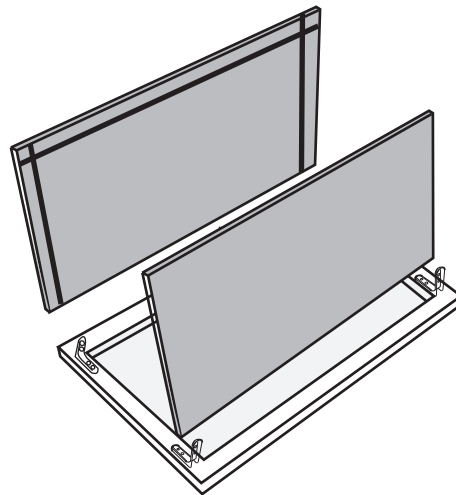
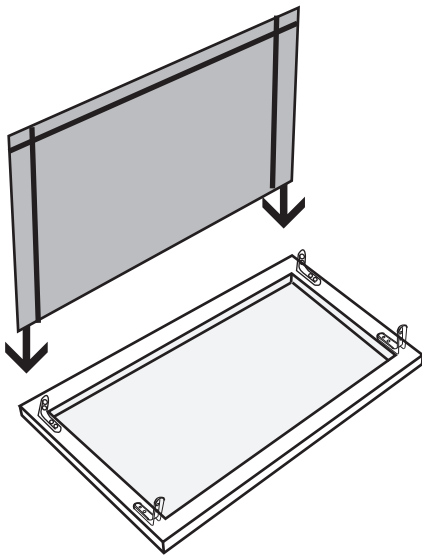
 2-3 mins

Set front of cabinet, face down on your padded work surface.

Slide one side panel into the precut channel on the face frame. Position an EZ-Square onto the face frame using the side panel as a position guide. Insert two screws through the EZ-Squares into the face frame. Now repeat for the 3 additional brackets on the face frame.



 = EZ-Square



4

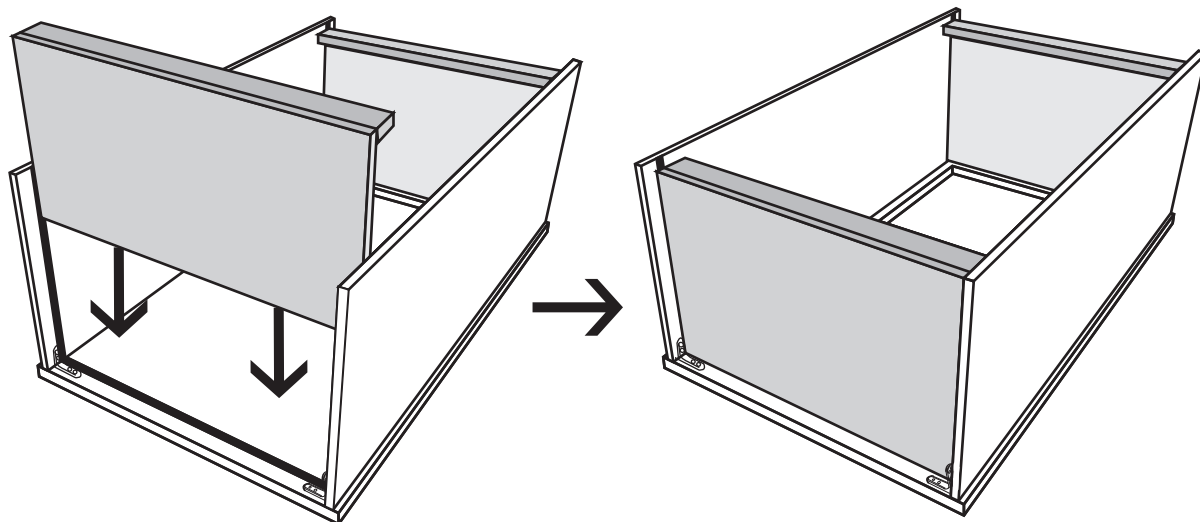
More assembly info available at:
www.dimensioncabinets.com/assembly
or drop us an email at:
info@dimensioncabinets.com


DIMENSION[®]
C A B I N E T S

Step 3 | Top & Bottom

 1 min

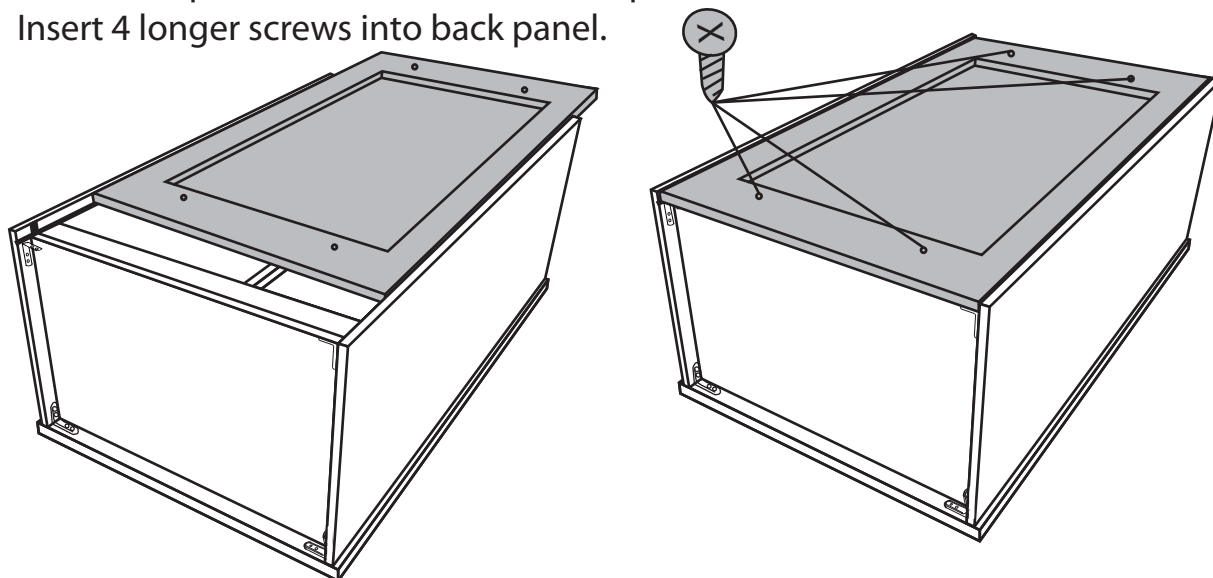
Slide the top and bottom of the floor of the cabinet into place using the dado joints. Now insert the remaining two screws into each of the four EZ-Squares.



Step 4 | Back It Up

 1 min

Insert the back of the cabinet into place. Attach the four remaining EZ-Squares to the side panels and then to the back panel. Insert 4 longer screws into back panel.



5

More assembly info available at:
www.dimensioncabinets.com/assembly
or drop us an email at:
info@dimensioncabinets.com



DIMENSION[®]
C A B I N E T S