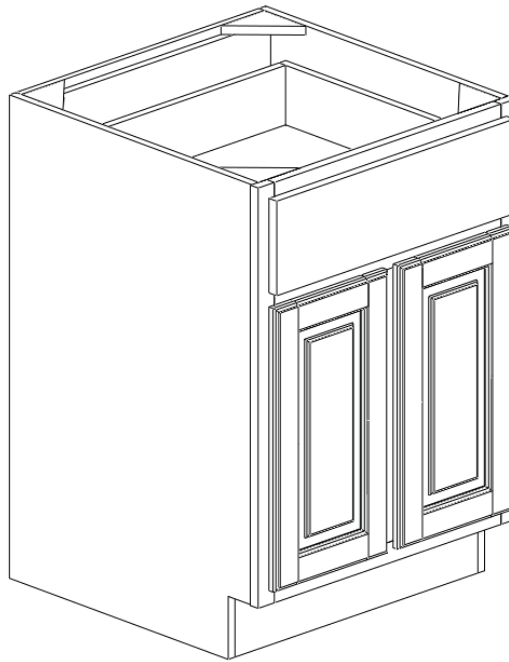


DIMENSION[®]
C A B I N E T S

Base Cabinet



Assembly Guide

1

More assembly info available at:
www.dimensioncabinets.com/assembly
or drop us an email at:
info@dimensioncabinets.com



DIMENSION[®]
C A B I N E T S

Hey there!

Assembling our cabinets is really simple, but in case you're a little nervous, this guide should help. Simply follow these quick easy instructions and you'll be a cabinet assembly master in no time. It's painless, promise!

Unlike many other ready-to-assemble (RTA) cabinets on the market, ours require NO hot glue guns, NO staple guns, NO bar clamps, or anything more sophisticated than a Phillips screwdriver and rubber mallet. NO KIDDING!

To speed up the assembly process, it can help to use an electric screwdriver.

Dimension Cabinets use the most versatile (it's simple too) fastening system. We call them EZ-Squares. They're basically angle brackets that are simple to use and really forgiving when installing. We'll show you where to place them, you anchor 2-4 screws and before you know it, you'll have two surfaces squarely and securely fastened together. It's really that simple. Some companies use cam-locks, and those are fine. We found that after a lot of in-field testing, and analysis, we're confident EZ-Squares are faster, simpler, and easier in the long run.

All hardware, mounting brackets, shelves, drawer pulls and screws are provided. A few extra screws are usually included as well.

Note:

As with anything new you do, there's a learning curve. We recommend you start with an easy wall cabinet when getting the hang of things, and then tackle the bigger more intricate pieces from there.

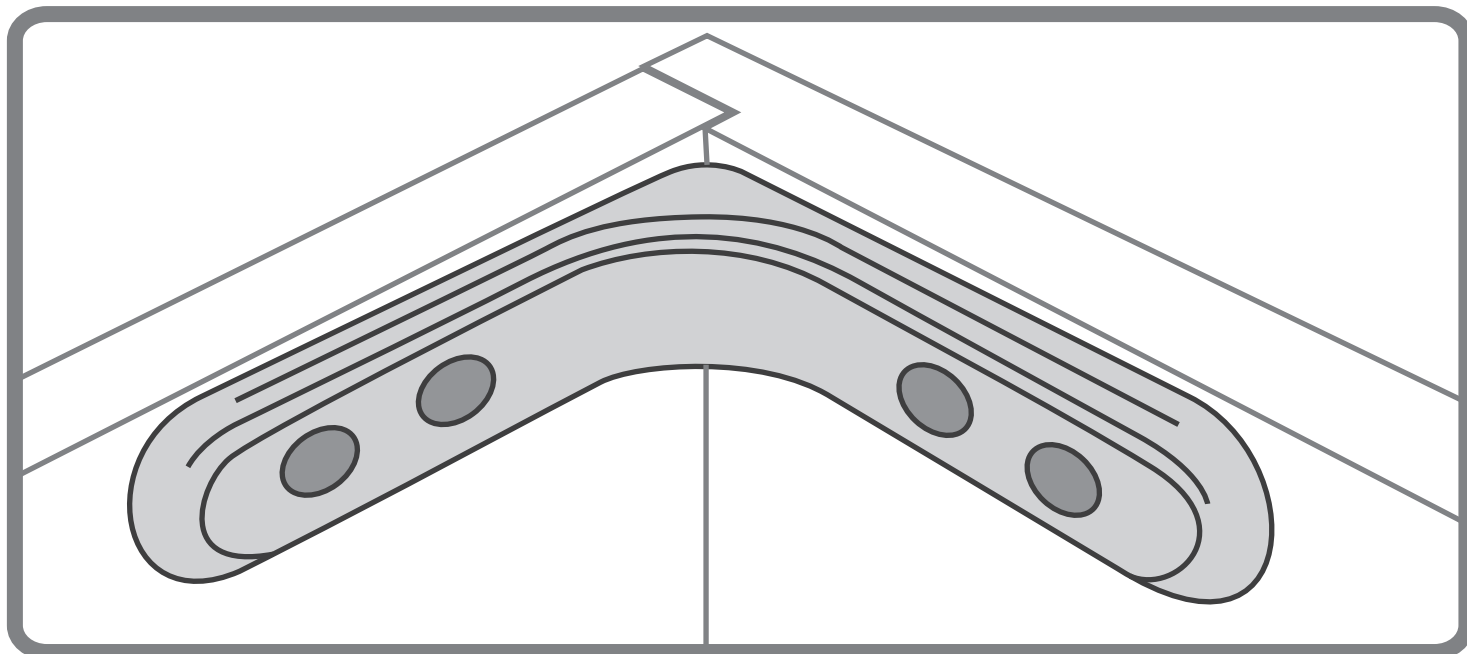
Let's get to it!

2

More assembly info available at:
www.dimensioncabinets.com/assembly
or drop us an email at:
info@dimensioncabinets.com



Meet EZ-Squares



Above you is the main fastening system for all Dimension Cabinetry. We call them EZ-Squares, because they are easy to use and will leave you with a strong and square cabinet in the end.

Using them is... easy! simply line one side up with the edge of one surface, fasten it with two screws on that side, line up the adjacent piece and fasten the other two screws. Presto! You have a strong reinforced connection that took very little time to accomplish. It really is that easy!

Now let's assemble a cabinet already!

Step 1 | Unpack & Organize

 1-2 mins

Place your RTA cabinet panels on a smooth, scratch resistant surface in a large, open area. Some people like to work on a carpeted area; others prefer to elevate the cabinet by placing it on a table top. If you are not using a carpeted area, use the foam sheets and box the cabinet came in to help protect the cabinet from being scratched during assembly.

3

More assembly info available at:
www.dimensioncabinets.com/assembly
or drop us an email at:
info@dimensioncabinets.com



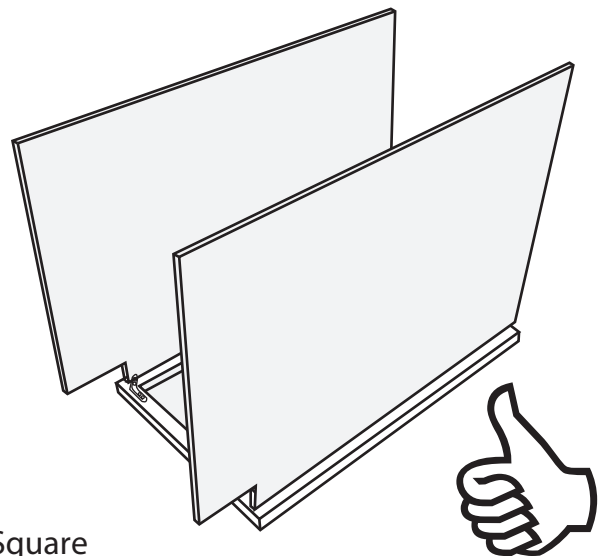
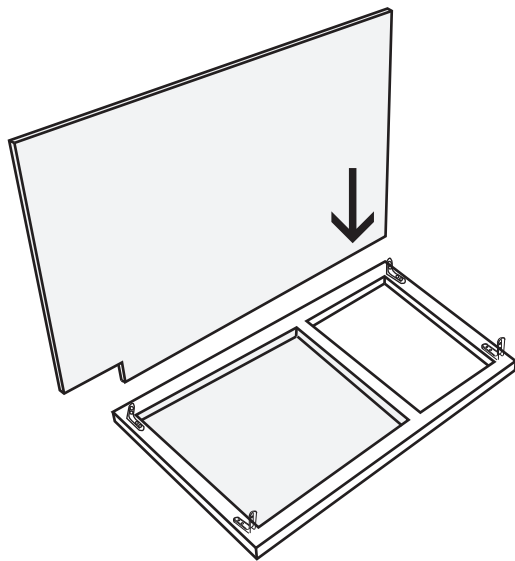
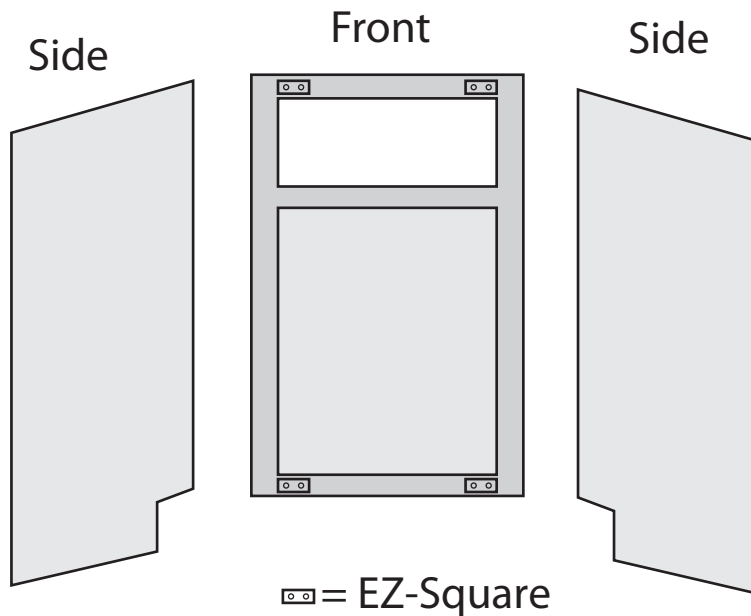
DIMENSION[®]
C A B I N E T S

Step 3 | Attach Sides To Front

 3-5 mins

Set front of cabinet, face down on your padded work surface.

Attach four of the EZ-Squares to the face frame in the positions shown below.



 = EZ-Square

4

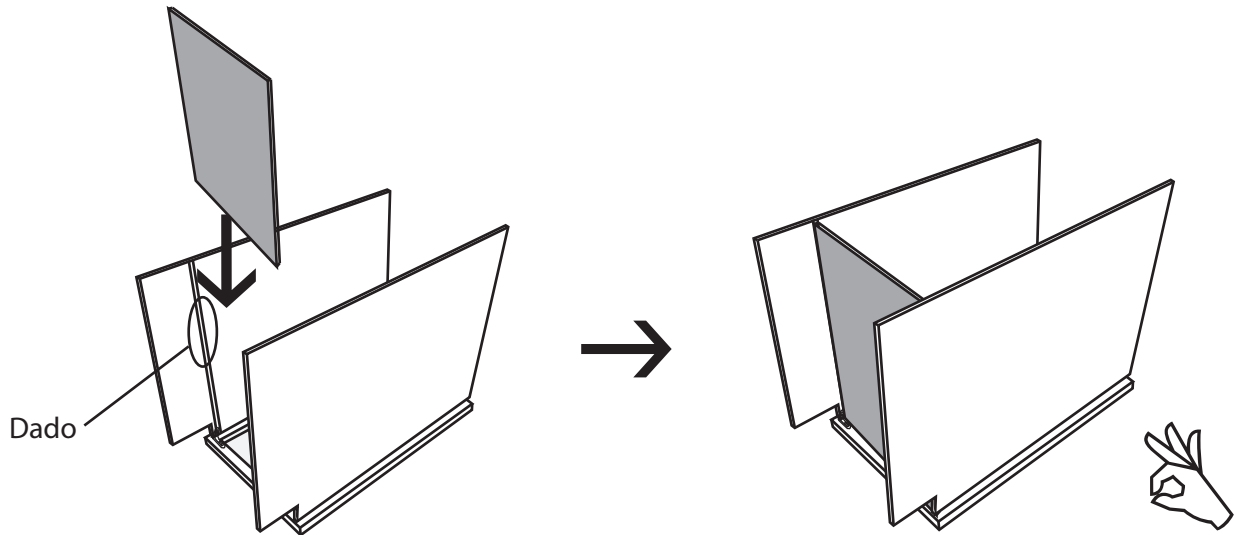
More assembly info available at:
www.dimensioncabinets.com/assembly
or drop us an email at:
info@dimensioncabinets.com


DIMENSION[®]
C A B I N E T S

Step 4 | Slide in Floor

 1 min

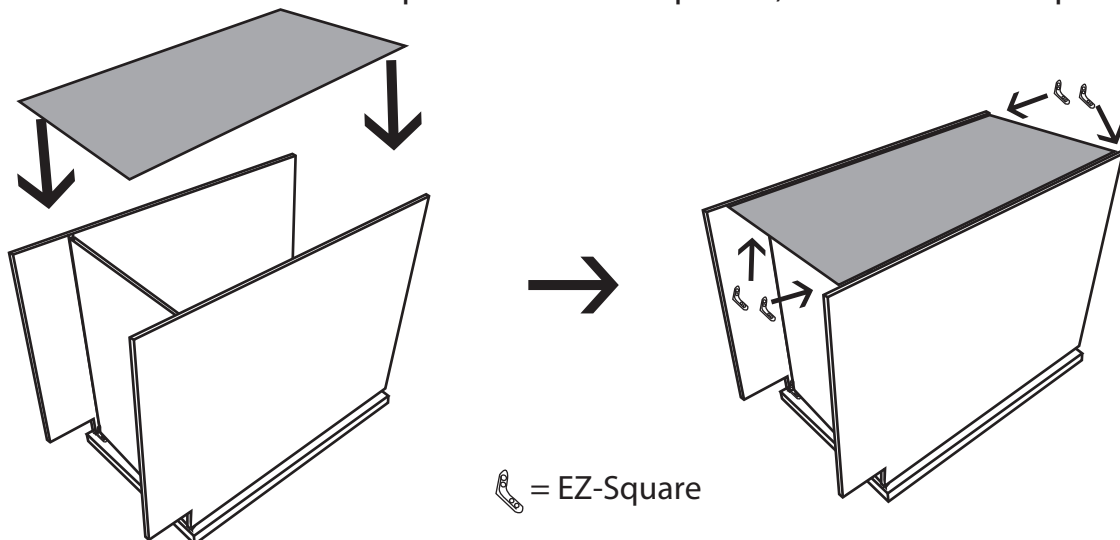
Slide the bottom floor of the cabinet into place using the dado joints (shallow grooves cut out of the sides of the cabinet) as a guide. The floor of the cabinet should be easy to identify because it is usually only finished on one side and should be just a little thinner than the dado joints on the side of the cabinet towards the bottom.



Step 5 | Back It Up

 2 mins

Insert the back panels into the two narrow dado joints in the side panels. Attach four more of the EZ-Squares to the side panels, then to the back panel.



We're getting close...

5

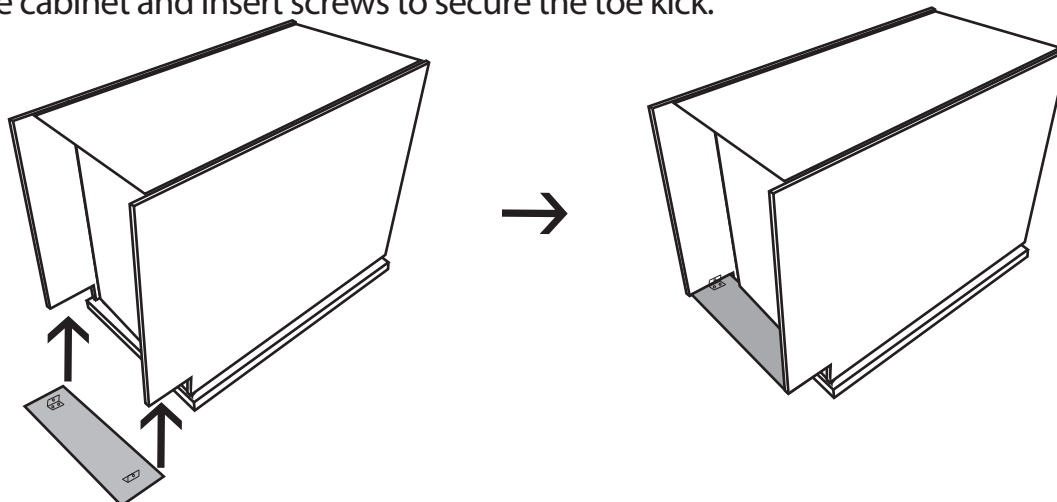
More assembly info available at:
www.dimensioncabinets.com/assembly
or drop us an email at:
info@dimensioncabinets.com


DIMENSION[®]
C A B I N E T S

Step 6 | Toe Kick

⌚ 1 min

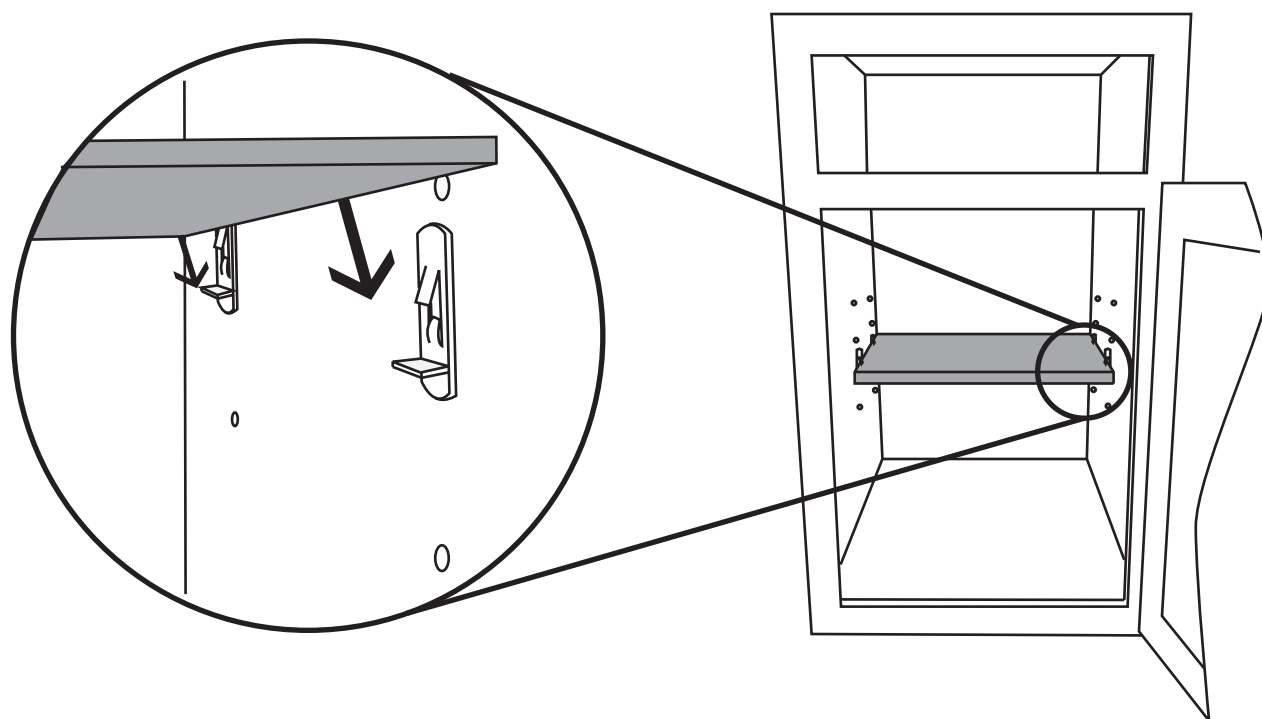
Attach the two small L shaped brackets to the toe kick piece. Slide into position on the cabinet and insert screws to secure the toe kick.



Step 7 | Shelving

⌚ 1 min

From the hardware bag, put the clear acrylic shelf clips into place. Pop the shelf into position.



6

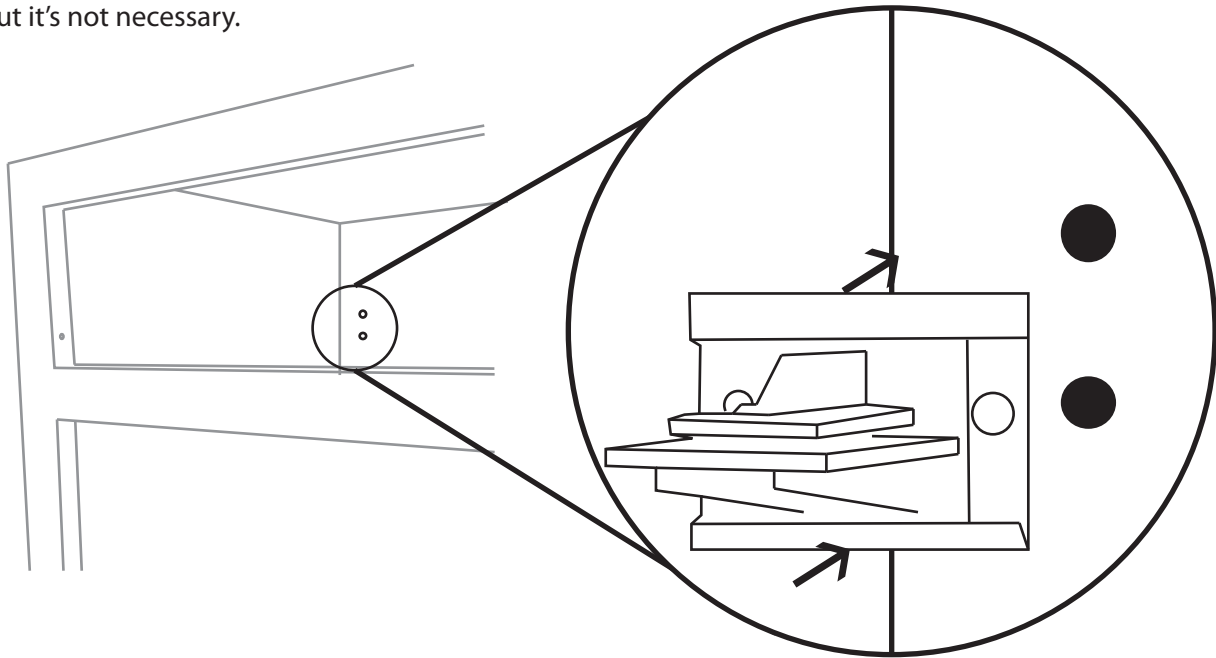
More assembly info available at:
www.dimensioncabinets.com/assembly
or drop us an email at:
info@dimensioncabinets.com


DIMENSION[®]
C A B I N E T S

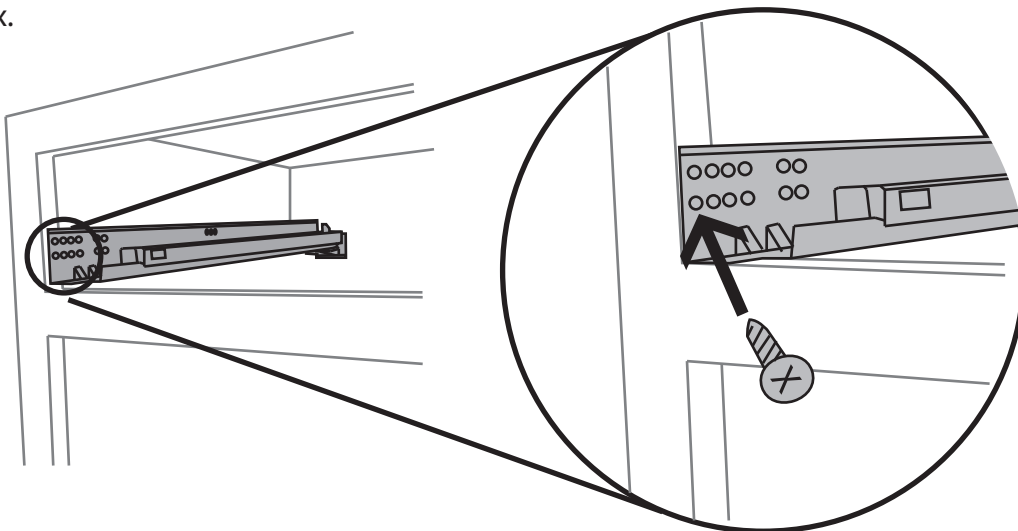
Step 8 | Drawer Glides

⌚ 1-2 mins

We use several different types of glides, but for this assembly guide we're covering our most popular soft-close glide. The process is extremely easy. Locate the plastic L-shaped "boot" and place it into the corresponding holes in the back of the cabinet. You can use the supplied optional screws to fix it in place but it's not necessary.



Next, take the metal glide and slide it into the plastic "boot" you just attached to the back of the cabinet. Line the front of the glide so it's flush with the front of the frame (and pre-drilled hole in frame), using a small supplied 7/16" flathead screws to hold everything in place. Repeat on other side of cabinet. **Note:** Save the orange & blue clips for a later step. They mount to the drawer box.



You're doing a great job!

7

More assembly info available at:
www.dimensioncabinets.com/assembly
or drop us an email at:
info@dimensioncabinets.com

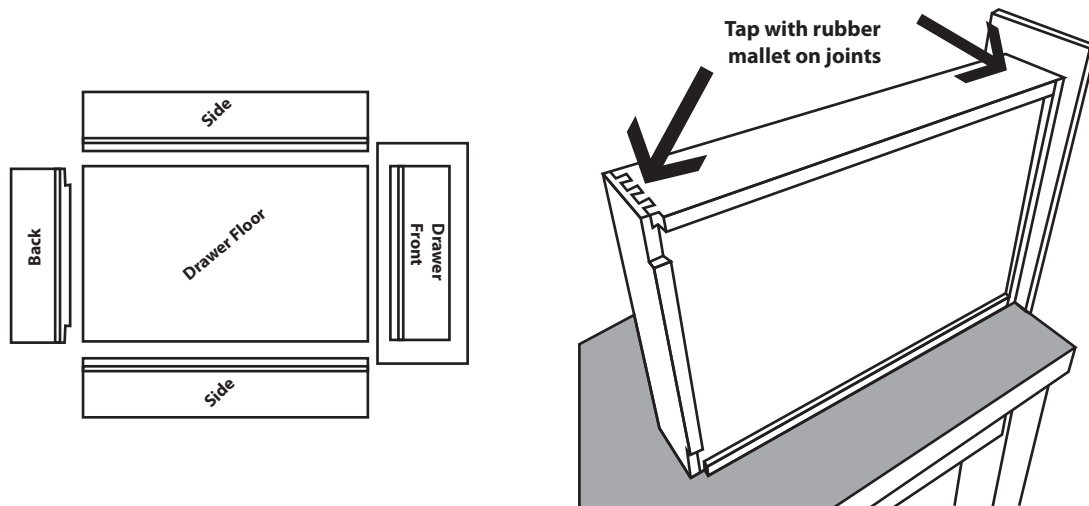


DIMENSION[®]
C A B I N E T S

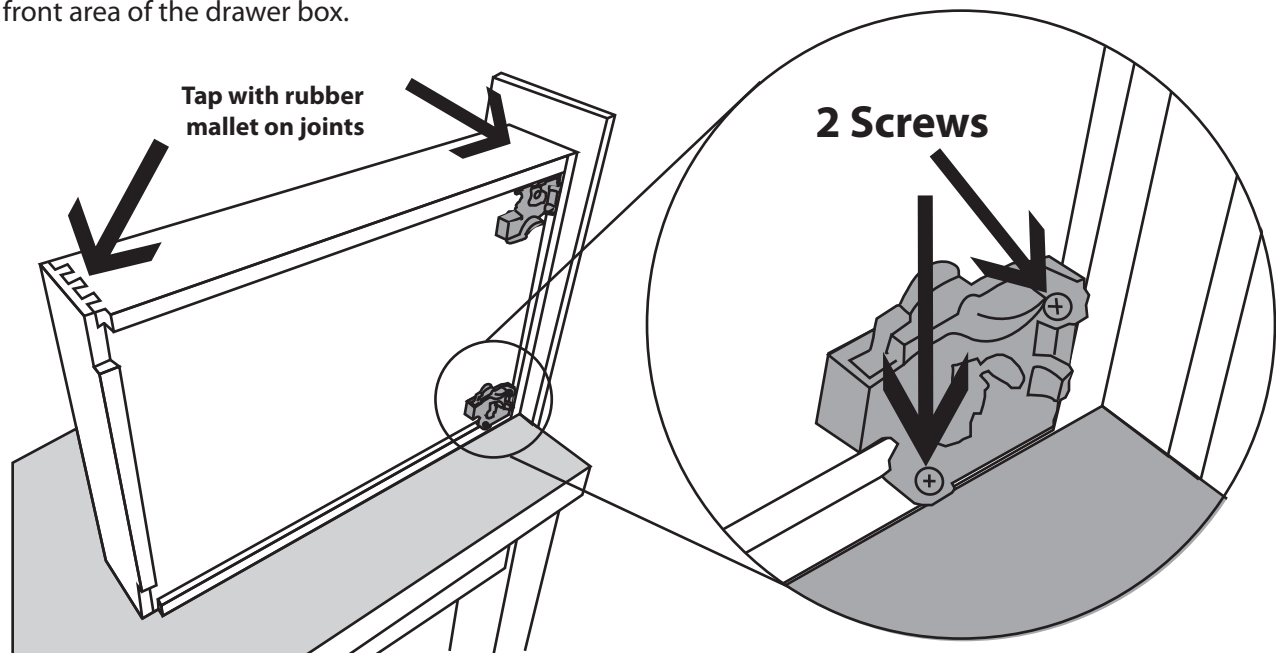
Step 9 | Put on your drawers

 3 min

There are five pieces that make up the drawer. If your drawers don't have dovetail joints, then simply line up the pieces as shown below and use supplied 1¼" screws and the pre-drilled holes to fasten all the parts together. If your drawers use dovetail joints, then good news, no screws necessary! Line up all the parts, hanging the front of the drawer over a padded counter-like surface. Take a rubber mallet and gently coax the dovetail joints together until flush. Note: You can apply wood glue to the joints at this step, but normally the joints are tight enough that it's not necessary.



Now, you're going to use those fancy orange & blue clips we saved from earlier. Simply line them up as shown and use the stainless steel screws that came packaged with the clips to fasten them to the bottom front area of the drawer box.

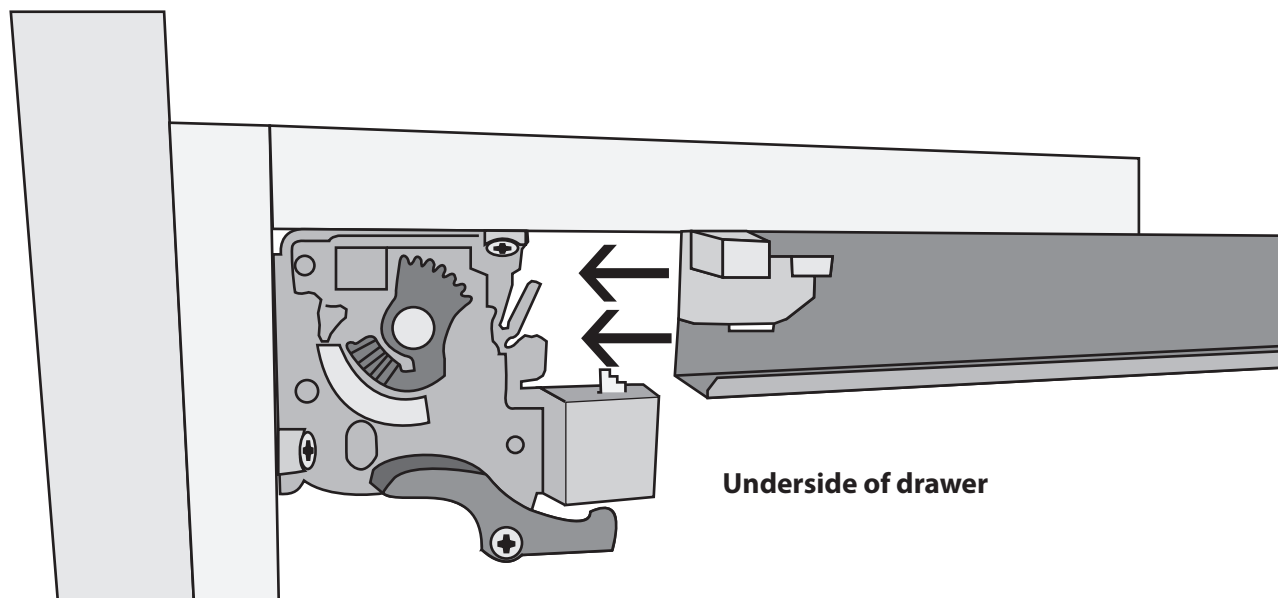


8

More assembly info available at:
www.dimensioncabinets.com/assembly
or drop us an email at:
info@dimensioncabinets.com


DIMENSION
C A B I N E T S

Place the assembled drawer box on top of the extended metal glides. Towards the back of the metal glide, you'll notice there's a prong. Push the prong into the pre-drilled hole located in the rear of the drawer until it's flush with the back of the cabinet. You'll hear a few "clicks" that will let you know the drawer is locked into place.



Click!

